





# Flight Planning

- Fuel to destination
- Fuel to an alternate landing area
- Statutory reserves
- Holding fuel requirements
  - INTER            30 min = 350kg fuel
  - TEMPO            60 min = 700 kg fuel



# Minimum Weather

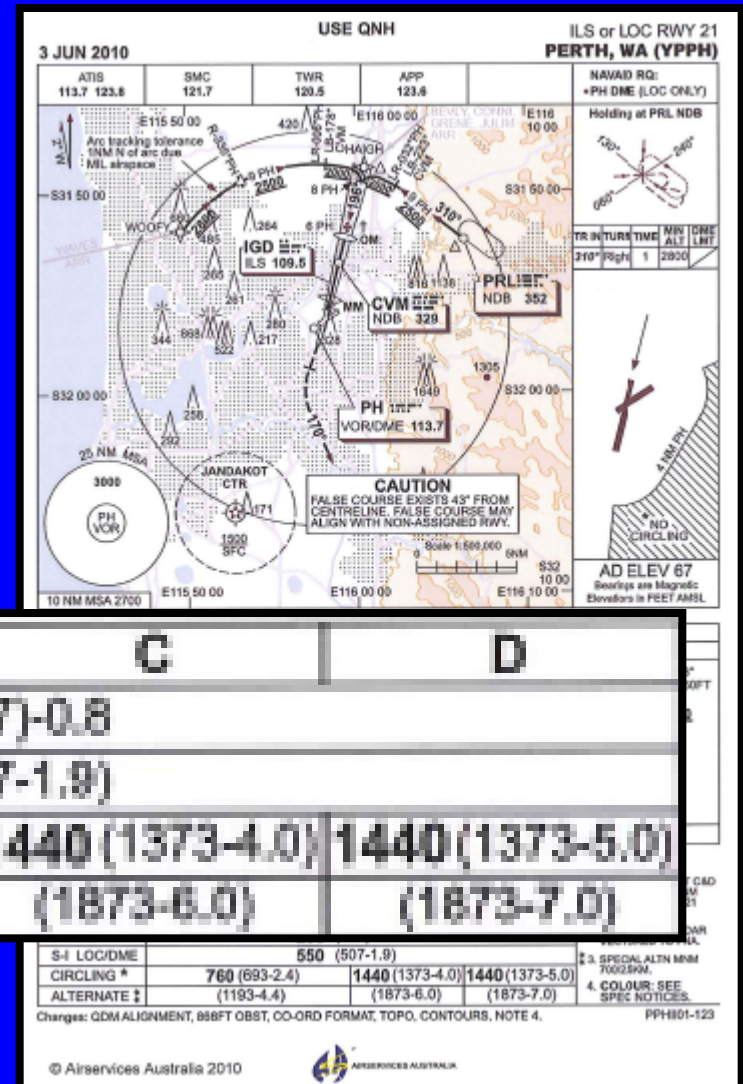
- Visual Flight Rules
  - Ceiling 1000'
  - Visibility 3km





# Minimum Weather

- Instrument Flight Rules
  - Ceiling
  - Visibility
  - Use of actual weather





# Airport Weather Forecast

**PERTH (YPPH)**

**TAF YPPH 310433Z 3106/0112**

**10010KT 9999 LIGHT SHOWERS OF RAIN FEW015 BKN030**

**FM311000 11012KT 6000 LIGHT RAIN BKN010 BKN050**

**FM010200 13014KT 9999 NSW BKN025**

**FM010700 13014KT 9999 BKN050**

**TEMPO 3106/3118 2000 THUNDERSTORMS WITH RAIN BKN006  
FEW030CB**

**INTER 3118/0102 5000 SHOWERS OF RAIN BKN010**

**RMK**

**T 16 15 11 10 Q 1012 1012 1014 1015**



# Destination / Alternate Airfield

- Weather
  - Ceiling
  - Visibility
- Navigation aids
- Lighting



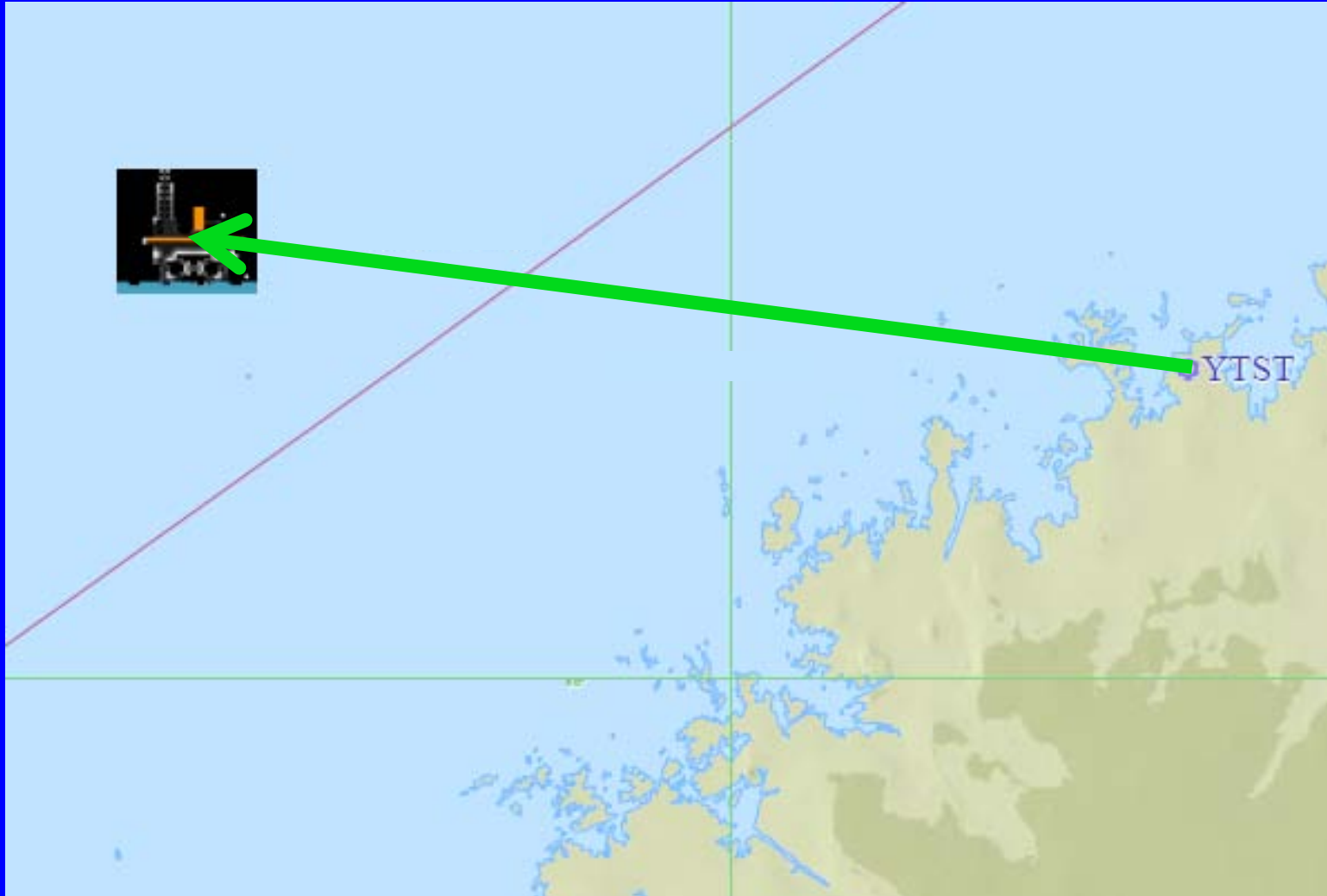


# Alternate – Scenario 1





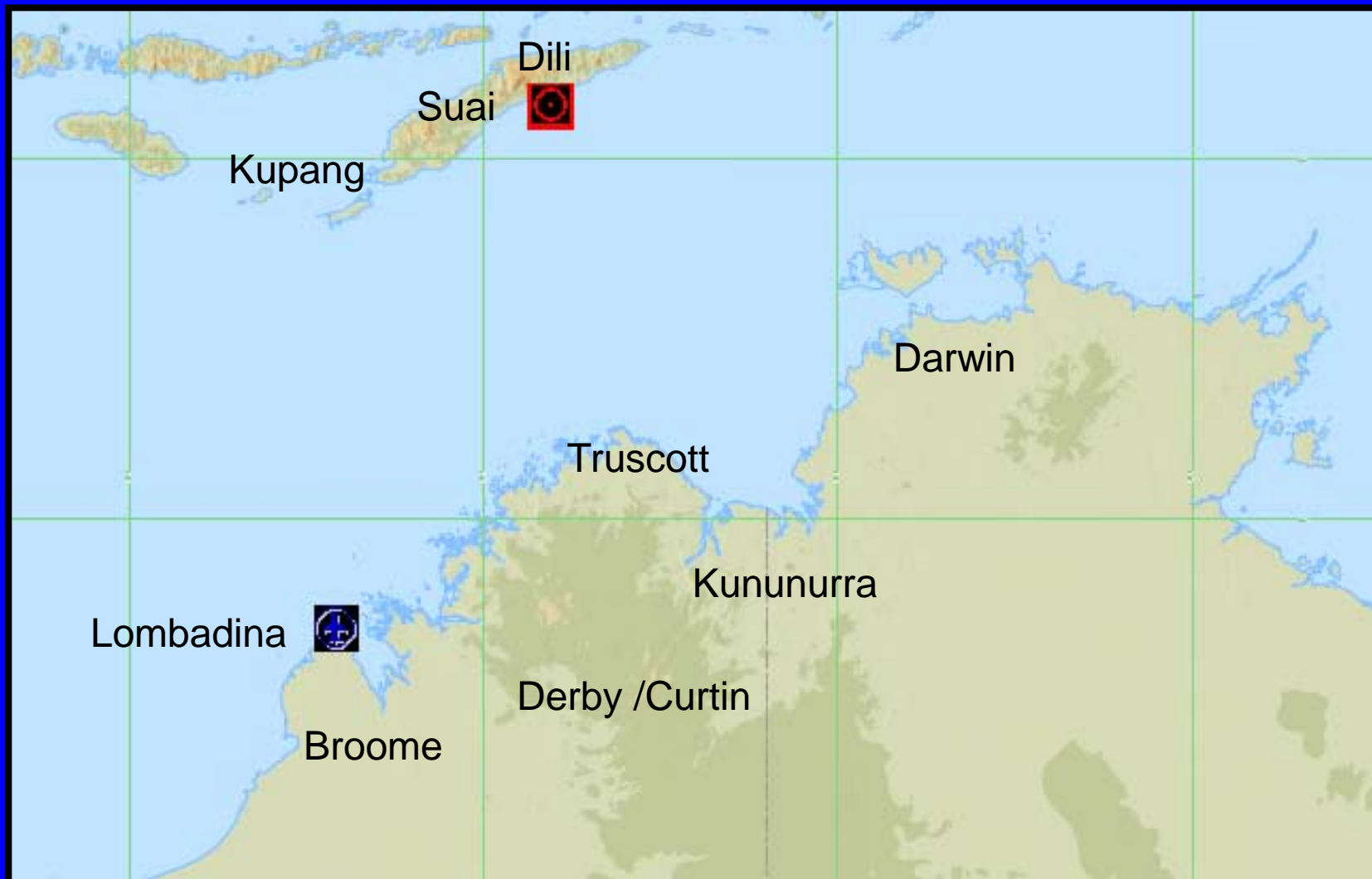
# Alternate – Scenario 2





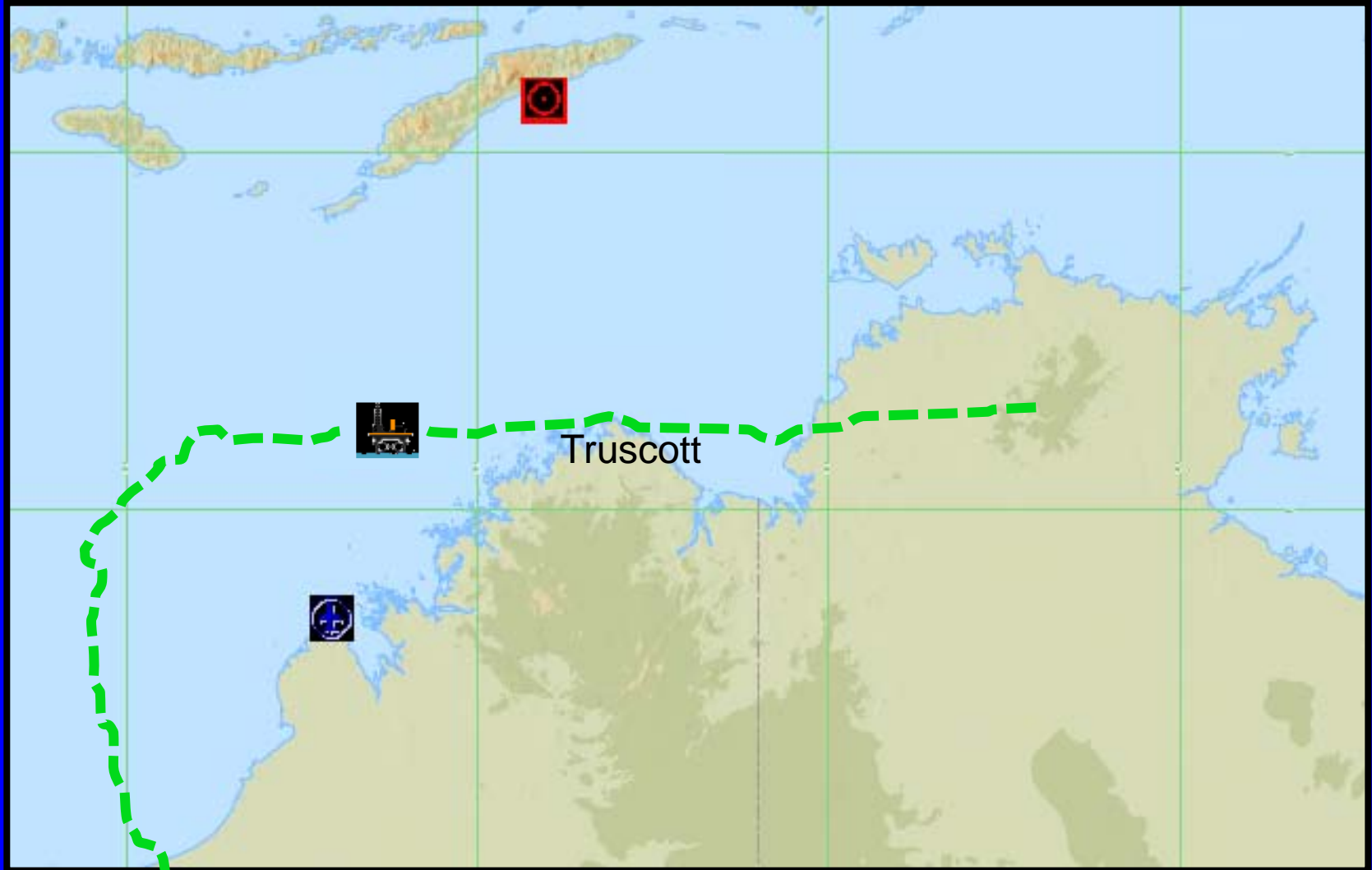


# Suitable Alternates





# Air Base Closure



Ron Maurer

Cyclone Evacuations

10



# Wind Limitations

- Maximum for normal operations 70 kt
- Loading/unloading passengers 45 kt
- Start / shutdown
  - AS332 35 kt
  - S92 45 kt
  - EC225 50 kt





# Pitch / Roll /Heave Limits

- Variable for different aircraft types
- Differ for small or large vessels, semi subs and helideck positioning





# Fixed Wing Limitations

- Runway length
- Runway width
- Lighting
- Runway surface (gravel / sealed / wet)
- Access to ground services



# Fixed Wing Limitations

- Fixed wing crosswind limitations

- DHC-8                      Dash 8                      36 kt
- EMB120                    Brasilia                    30 kt
- B200                        King Air                    25 kt
- C441                        Conquest                  25 kt



Ron Maurer



Cyclone Evacuations





# QUESTIONS?

