



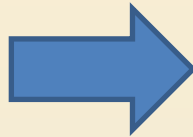
Mining and Men

It's a gendered risk...

factive.

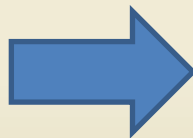


How ready is your organisation to respond to gendered behaviours that affect safety?



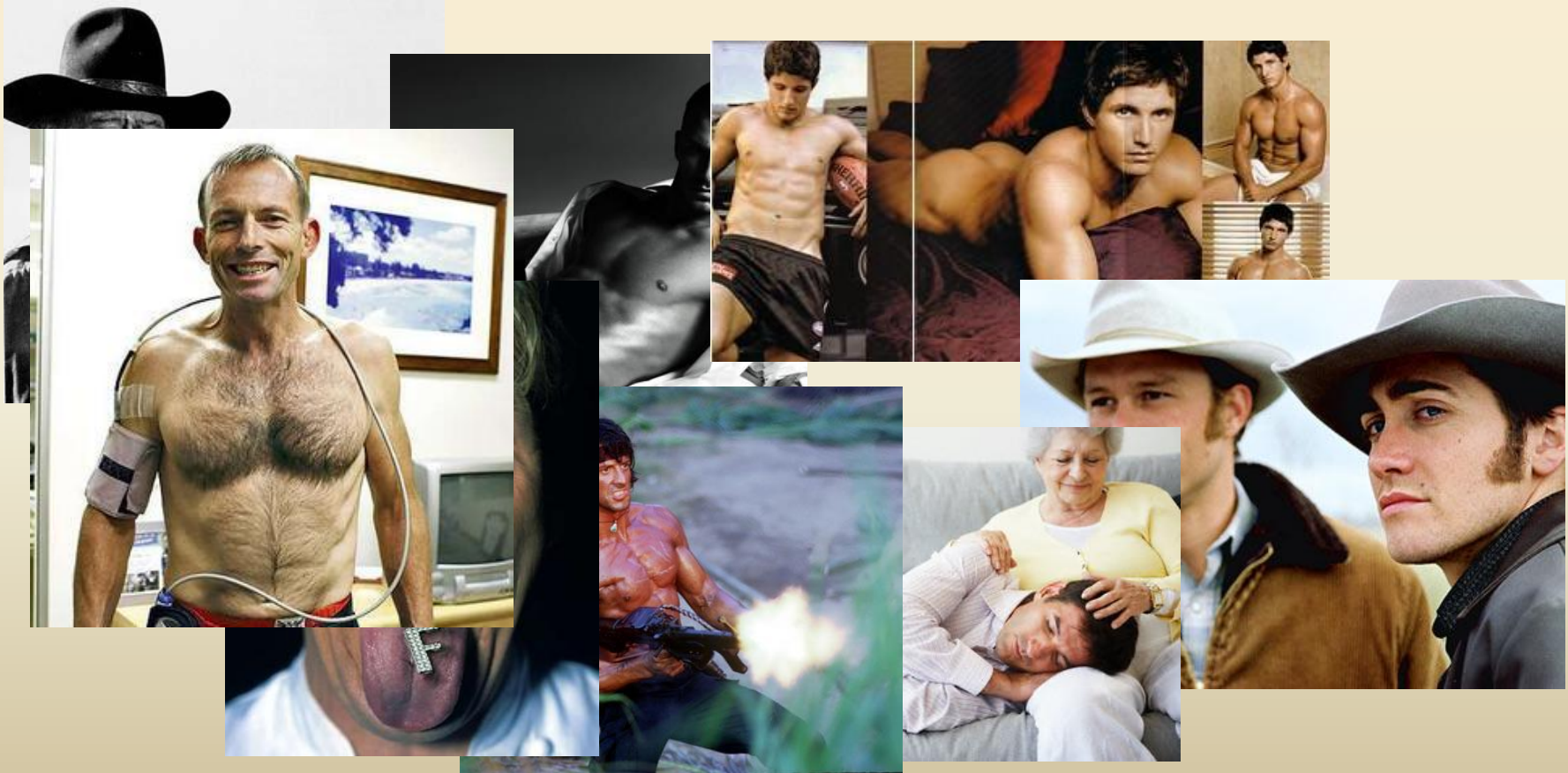
Gendered Behaviours Audit

How do the men in your organisation understand their gendered behaviours?

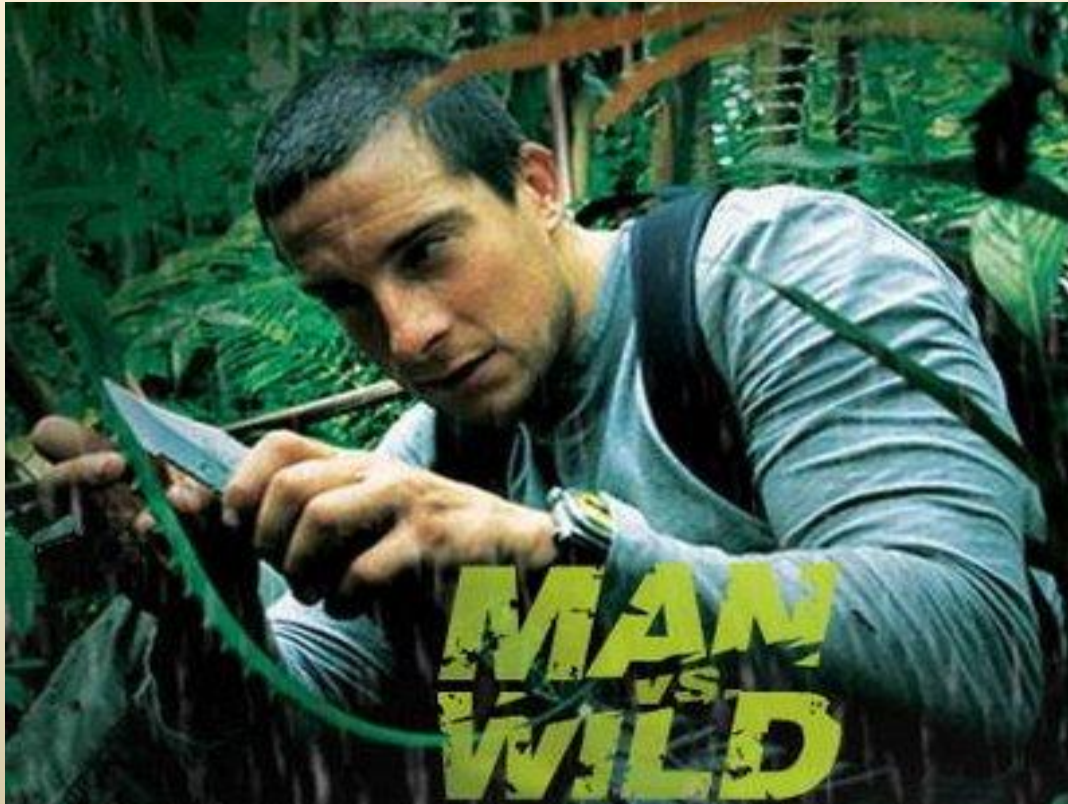


Gendered Behaviours Action Research Mentor Program

Crisis of Masculinity



The Construction of Masculinity



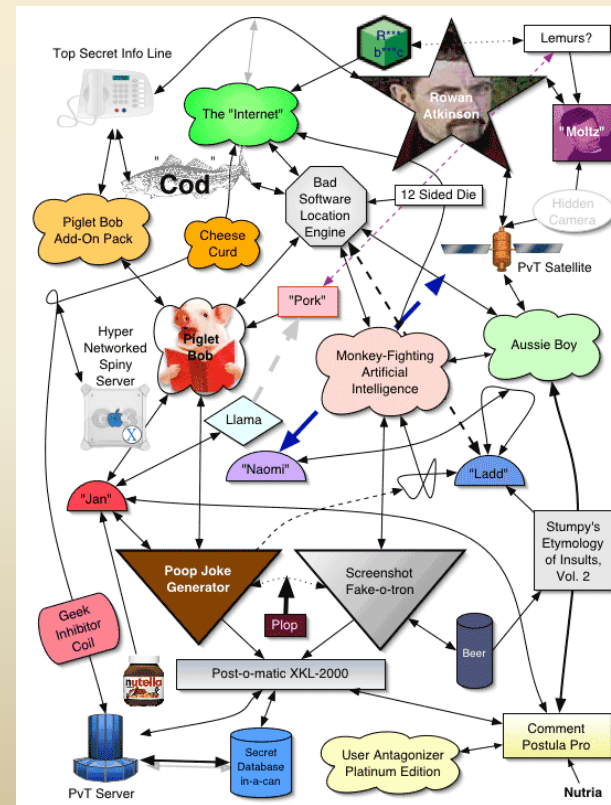
Men into Mining



- 83% men
- Traditional notions of sex and gender
- Traditional notions of masculinity
- Isolation
- Remote and “unknown” locations
- Big toys
- Money
- Dirty

Safety Management

- Engineering
- Organisational structure
- Policies and procedures
- Communication
- Behavioural observations



Safety: Because you're Worth it

Men Expert

Discover the skincare line designed exclusively for men from L'Oréal Paris. Whatever his age, whatever his lifestyle, MEN EXPERT has the solution.



Gendered Behaviours Audit

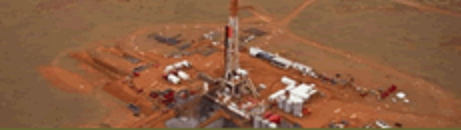


- How do your documents refer to gender?
- How does your training engage with gender?
- How does gender affect decision-making?
- What is available to promote an awareness of gendered behaviours and safety?
- How well do you monitor the impacts of gender on safety?

Gendered Behaviours Action Research Mentor Program



- How do workers understand their own experience of masculinity, as individuals and as part of a group?
- What do workers gain and/or lose from these experiences?
- How do workers understand the informal rules and codes of conduct relating to maleness and masculinity in their specific workplace culture?



Questions

